

**Model No.**

**- 8842 -**

**p/n 108842**

***Specifications***

- *Height - 60" (22" packed)*
- *Width - 45"*
- *Depth - 80" (36" packed)*
- *Weight - 52 lbs.*
- *Instructions - 103073*



**- Clam Customer Service Information -**

**NOTICE:** Once used, this shelter cannot be returned to the store. Please contact Customer Service directly at the email address or phone number below.

- Customer Service Hrs: 9am to 4pm, Monday – Friday Central Standard Time
- Phone: 763-231-4120
- Fax: 763-231-4121
- Email: [customerservice@clamcorp.com](mailto:customerservice@clamcorp.com)

**\*\* Warranty cannot be honored without an original, dated receipt \*\***

**IMPORTANT! PLEASE READ: Warranty Information**

This product is warranted to the original retail purchaser (not transferable). This product is to be free from manufacturer's defects for one (1) year from the date of the original purchase. Warranty does not cover cracked windows, tent tears, broken or bent hoops due to high wind weather conditions or unattended use. The part will be replaced or repaired (manufacturer's option) if found defective within the one (1) year time frame. Warranty will be void if product has been subject to neglect, misuse, improper installation, misapplication, alteration, or accident including, but not limited to, improper maintenance or use of unauthorized parts or attachments. Please read this entire owner's manual to ensure proper installation, use, storage, and care for your Clam shelter.

**To submit a Warranty Claim Request, please use one of the following methods:**

- **Email:** [CustomerService@ClamCorp.com](mailto:CustomerService@ClamCorp.com) (Preferred Method)
- **Fax:** 763-231-4121
- **Write:** Customer Service – Warranty Department  
600 Clydesdale Trail  
Medina, MN 55340

**Information needed to submit a warranty claim:** If you need to submit a warranty claim, please e-mail Clam's Customer Service Department at [customerservice@clamcorp.com](mailto:customerservice@clamcorp.com). In your e-mail, please include your full name, address, phone number, a copy of your receipt, a brief description of the problem, and pictures to clearly show the area(s) of concern. Clam's warranty department will review your request and a Clam representative will contact you regarding your claim status. All returns must be returned with postage pre-paid.

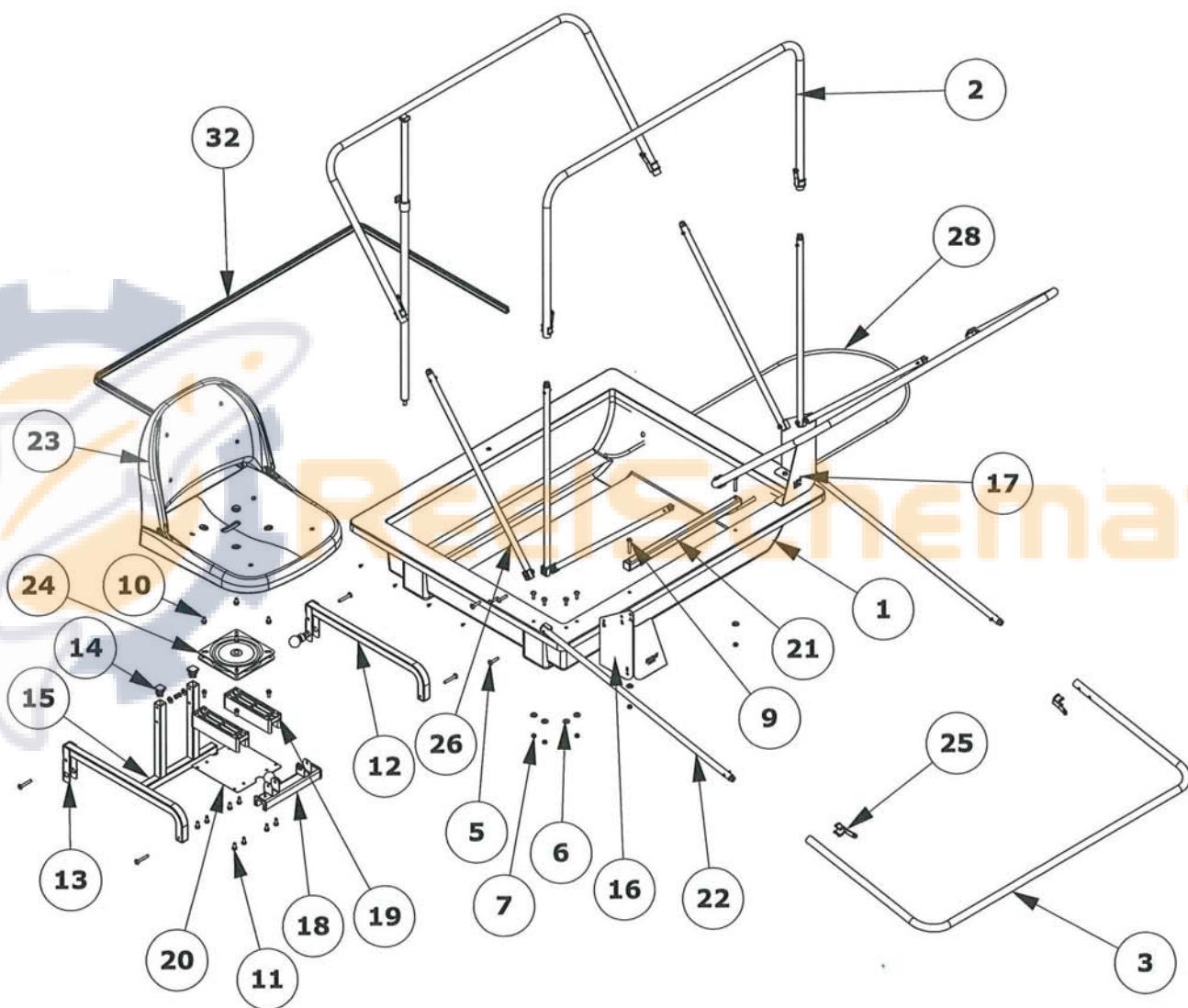
**- Limitation of Liability -**

*It is expressly understood that Clam Corporation's liability for its products, whether due to breach of warranty, negligence, strict liability, or otherwise, is limited to the repair of the product as stated above. Clam Corporation is not liable for any injury, loss, damage, or expense, whether direct or consequential, including but not limited to loss of use, income, profit, or damage to material arising in connection with the sale, installation, use of, inability to use, or the repair or replacement of Clam Corporation products. Clam Corporation reserves the right to make alterations or modifications in its products at any time, which in its opinion, may improve the performance and efficiency of the product. Clam shall not be obligated to make such alterations or modifications to products already in service.*

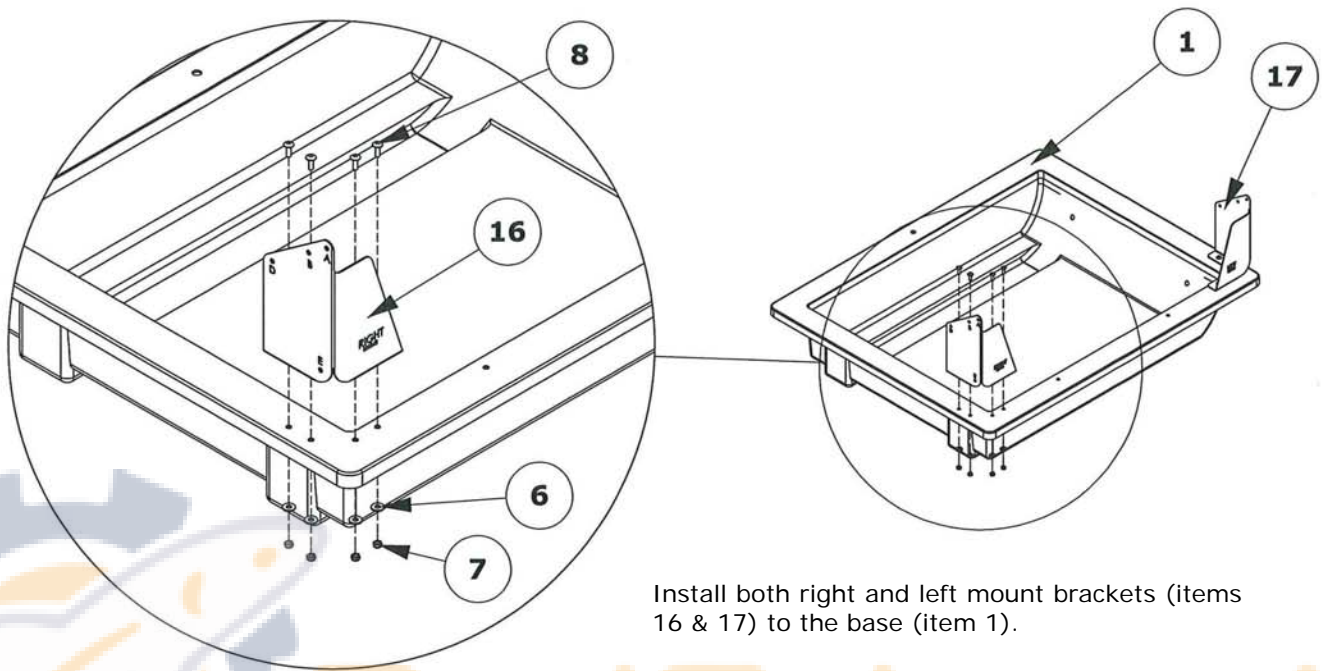
## - Parts List -

ITEM NO.	PART NUMBER	DESCRIPTION	QTY.
1	103053	BASE, PRO TC	1
2	103080	CANOPY HOOP POLE	3
3	103081	PORCH HOOP POLE	1
4	101083	TUBE SPACER CAP	8
5	101080	SCREW, 1/4"-20 X 1.25"	8
6	101081	WASHER, 1/4 FLAT	14
7	101082	NUT, 1/4"-20 THIN NYLOCK	22
8	101088	SCREW, 1/4"-20 X 0.75"	8
9	101486	SCREW, 1/4"-20 X 1.75"	6
10	101470	SCREW, 1/4"-20 X 0.50"	4
11	103122	SCREW, #14 X 5/8"	12
12	103040	FOLDING SEAT BRACKET W/SPRING PLUNGER	1
	103020	SPRING PLUNGER ASM.	2
13	103055	FOLDING SEAT BRACKET	1
14	102715	1" SQUARE TUBE PLUG	6
15	103026	UPRIGHT SHORT TUBE LEG	1
16	101042	RIGHT MOUNT BRACKET	1
17	101043	LEFT MOUNT BRACKET	1
18	103046	FRONT SLIDE BRACKET W/SPRING PLUNGER	1
19	103119	PLASTIC SEAT SLIDER	2
20	103120	SEAT SLIDER BOTTOM	1
21	103037	FRONT SEAT MOUNT TUBE	1
22	103147	1/2" EZ GLIDE PORCH SUPPORT POLE	2
23	102759	DELUXE SEAT	1
24	101399	SEAT SWIVEL	1
25	102650	RPS CLIP, 7/8"	8
26	103102	1/2" EZ GLIDE SIDE SUPPORT POLE	6
27	103162	TENT, PRO TC	1
28	101095	ROPE, 3/8 DIA X 9 FT TOW	1
29	101074	REAR ADJUSTABLE SPREADER POLE	1
30	102775	SLIP COVER, BOTTOM	1
31	102776	SLIP COVER, BACK	1
32	102814	MOLDING, V-CHANNEL	1
33	101148	SCREW, #6 X 0.38"	16
34	103073	INSTRUCTION, PRO TC	1

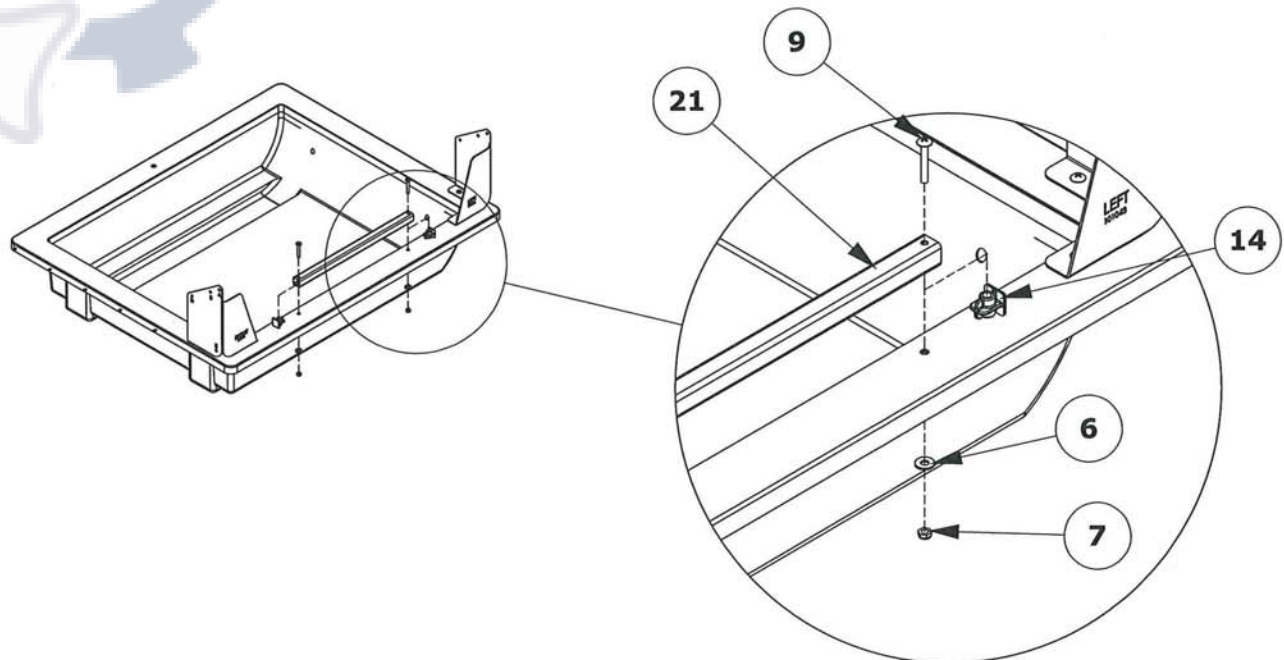
## PARTS



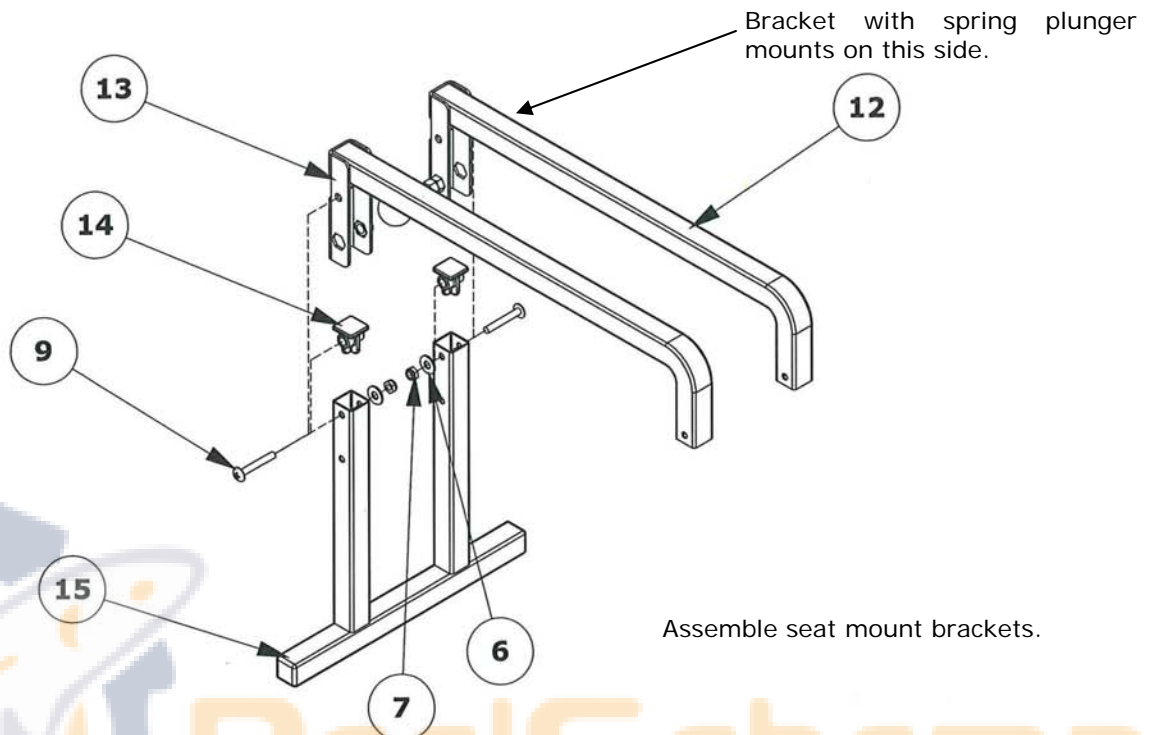
## STEP ONE



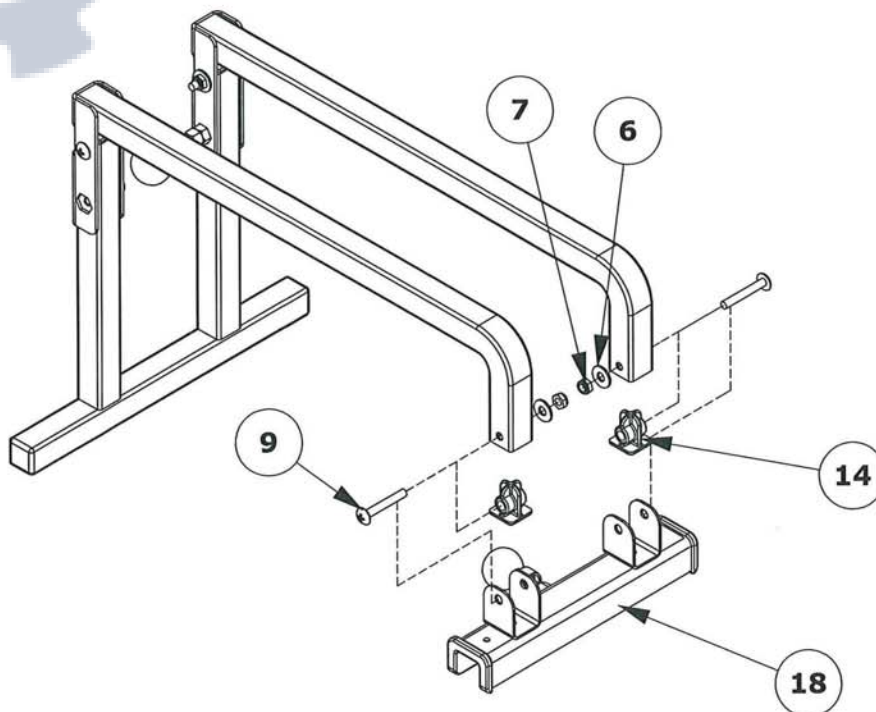
## STEP TWO



### STEP THREE

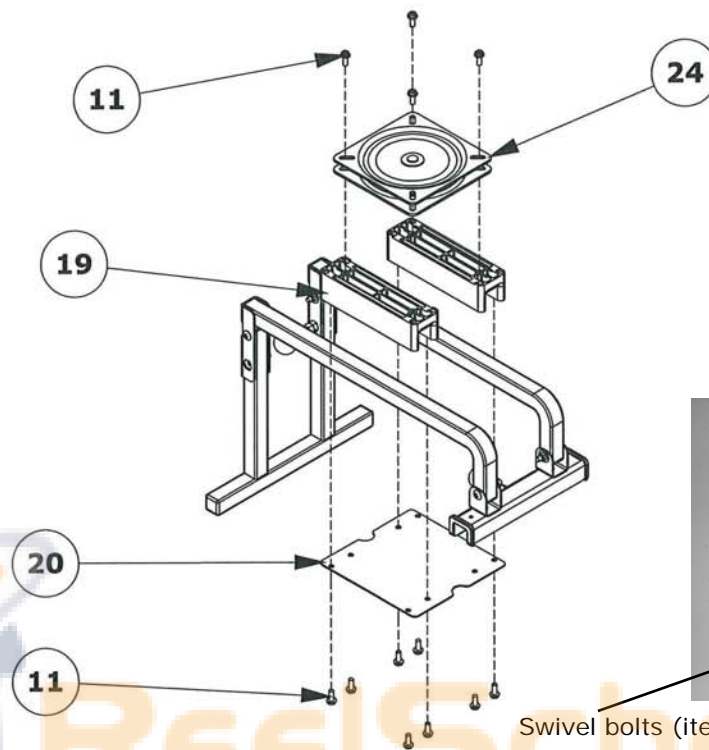


### STEP FOUR





## STEP FIVE



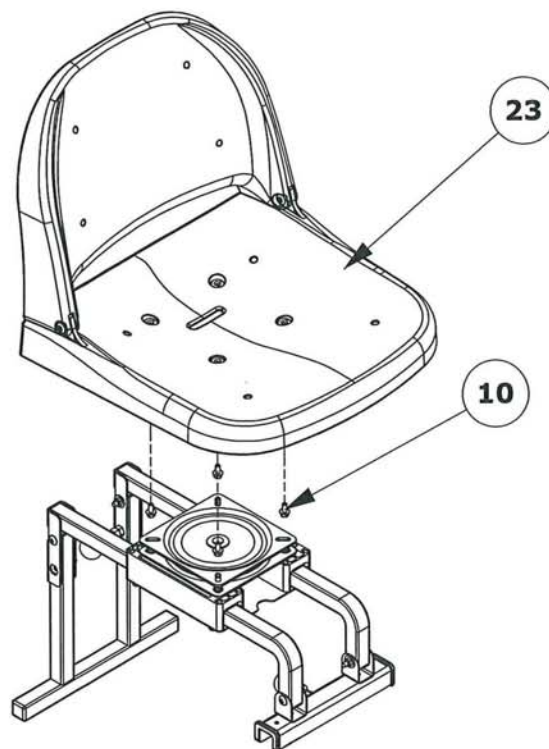
Install seat swivel (item 24) to seat slider and seat mount brackets.

Rotate the seat swivel (item 24) as shown to install on seat sliders and seat mount brackets.



Swivel bolts (item 11).

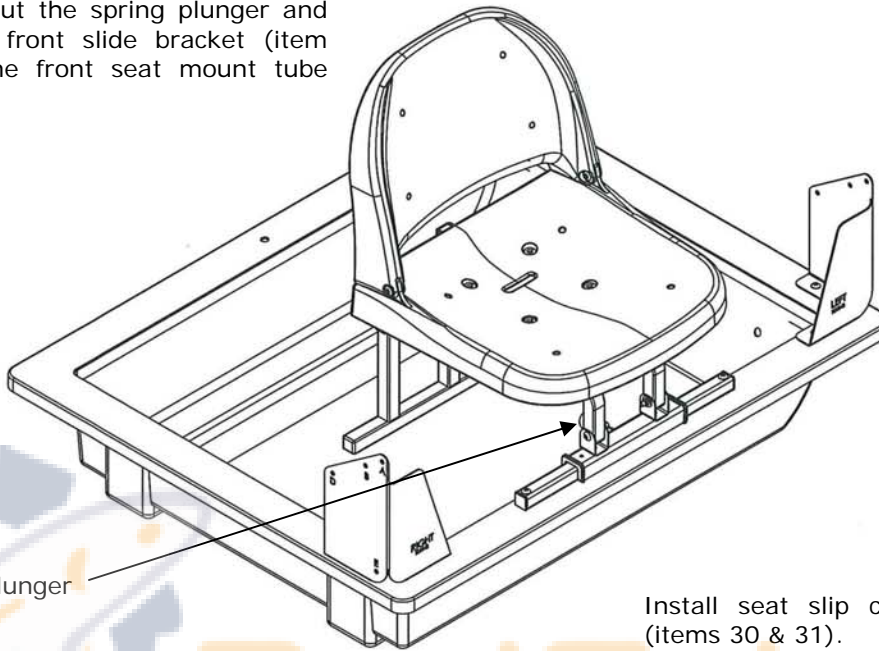
## STEP SIX



Install seat (item 23) to the seat swivel. Rotate the swivel for ease of installation.

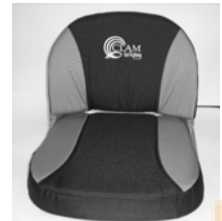
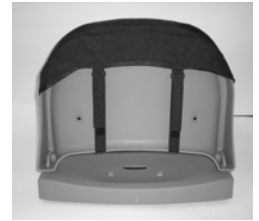
## STEP SEVEN

Install the seat assembly to the base by pulling out the spring plunger and setting the front slide bracket (item 19) onto the front seat mount tube (item 20).



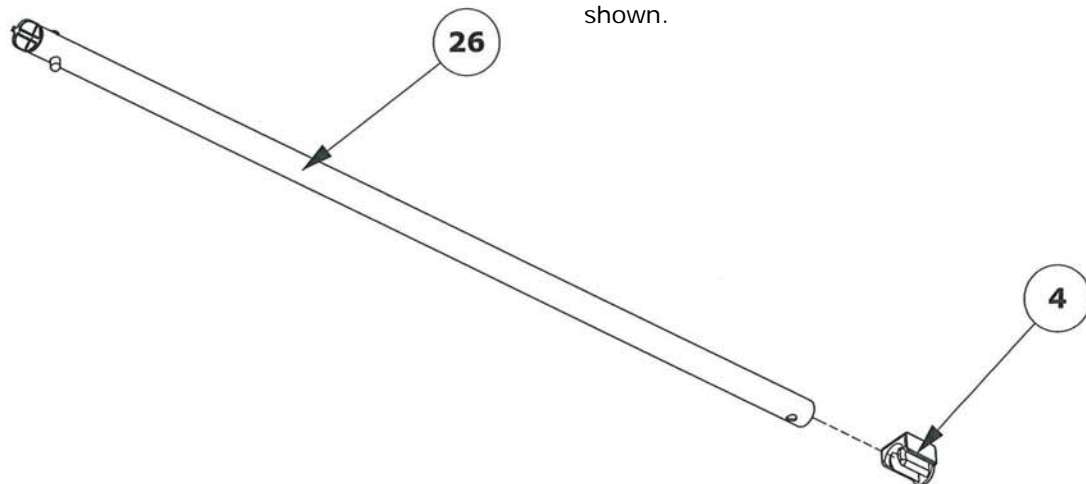
Spring plunger

Install seat slip covers (items 30 & 31).

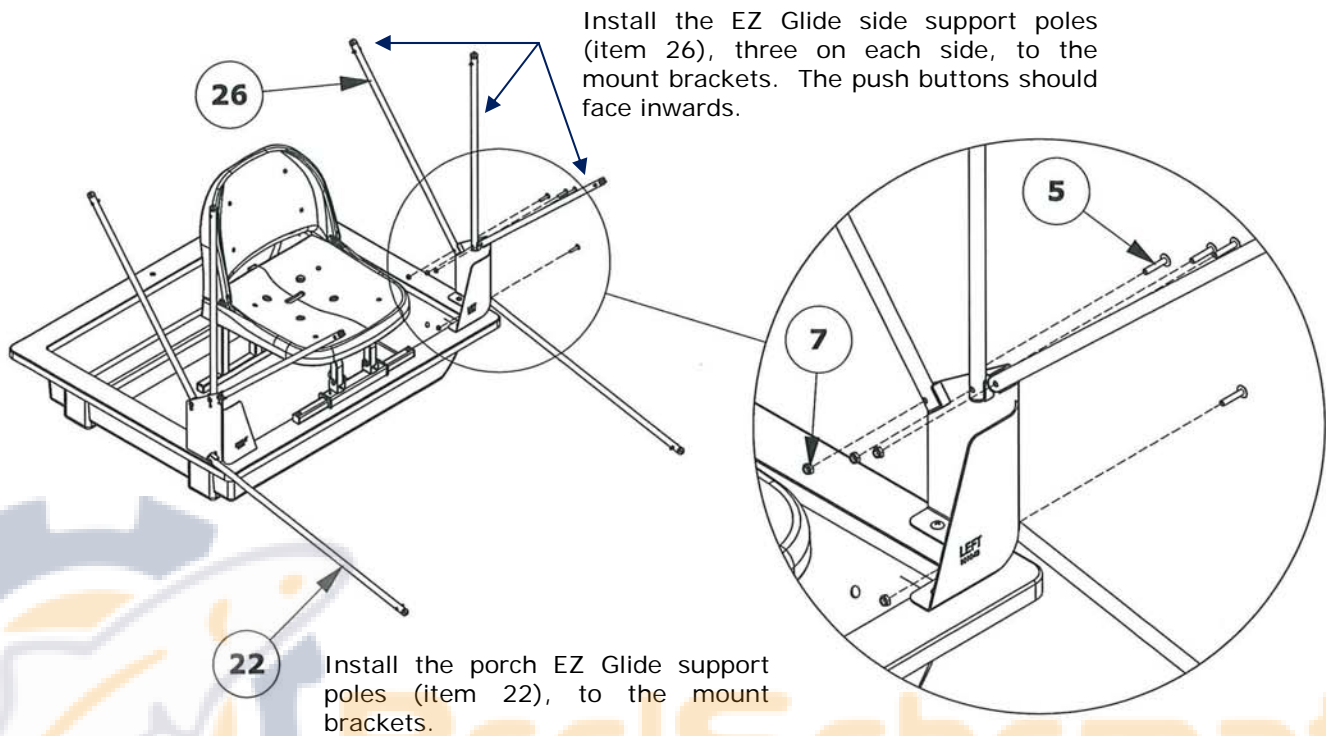


## STEP EIGHT

Install the tube spacer caps (item 4) to all of the EZ Glide support poles as shown.

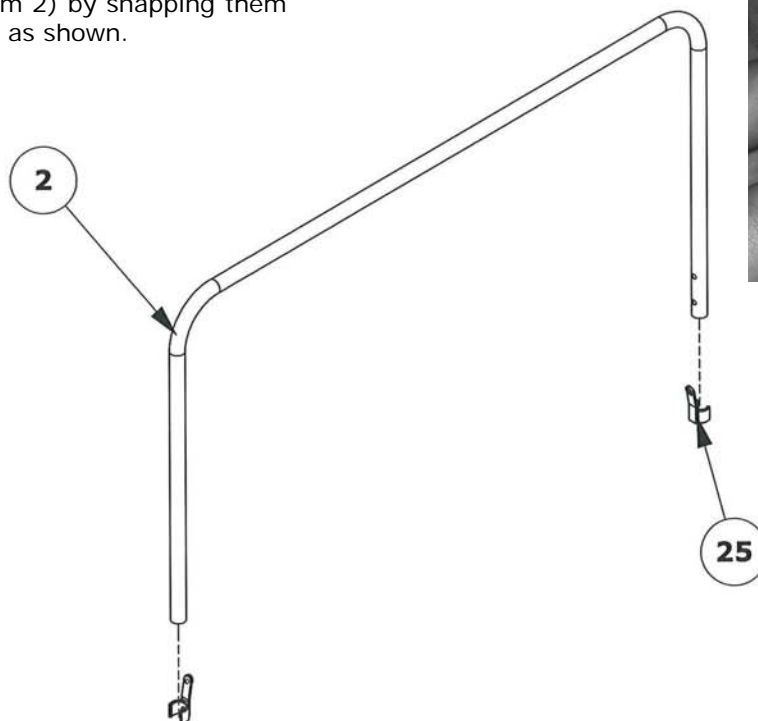


## STEP NINE



## STEP TEN

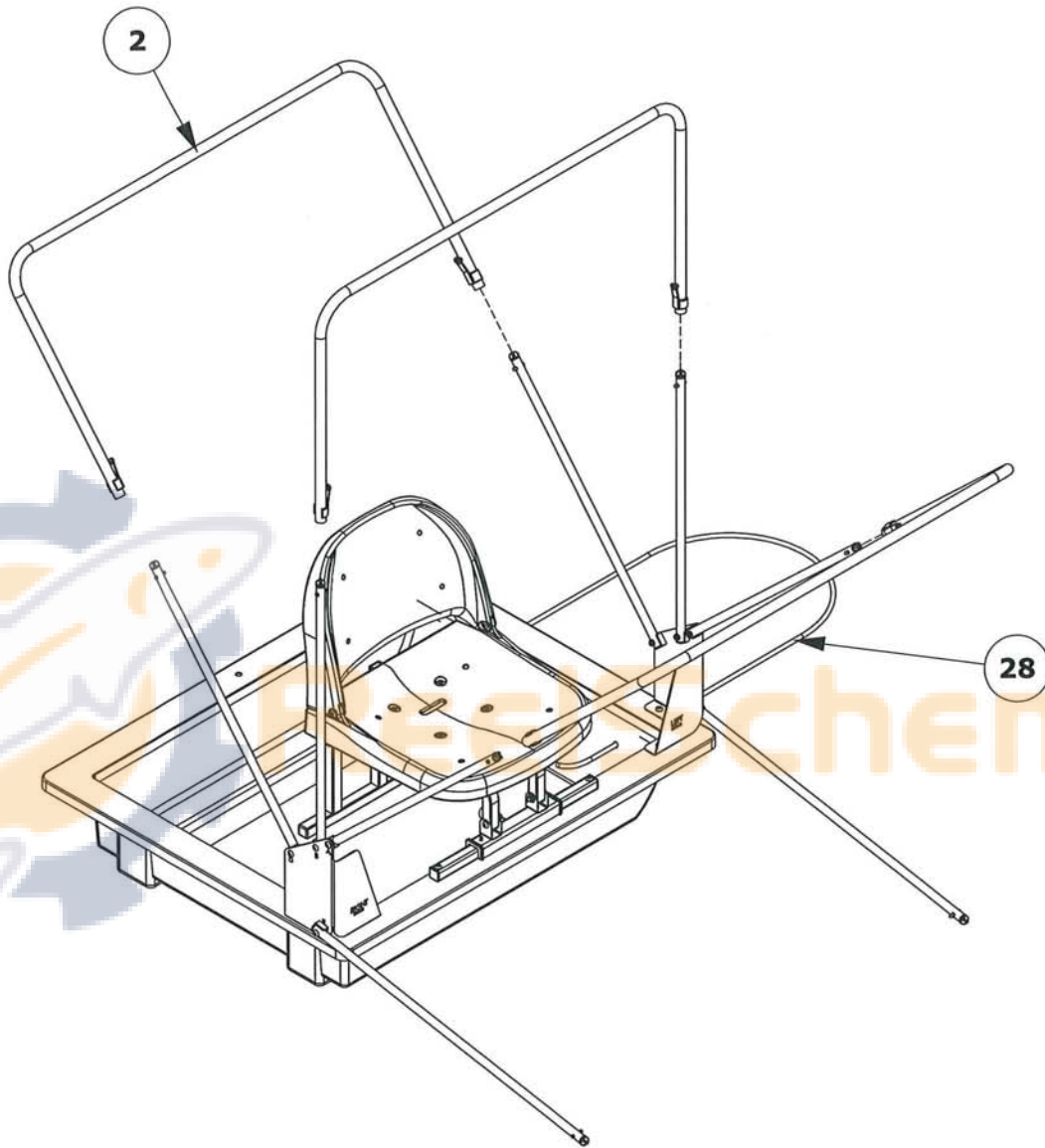
Install RPS (Rapid Pole Slide) clips (item 25) to the hoop poles (item 2) by snapping them in the correct position as shown.



Advised: Secure all RPS clips to the poles using electrical tape.



## STEP ELEVEN

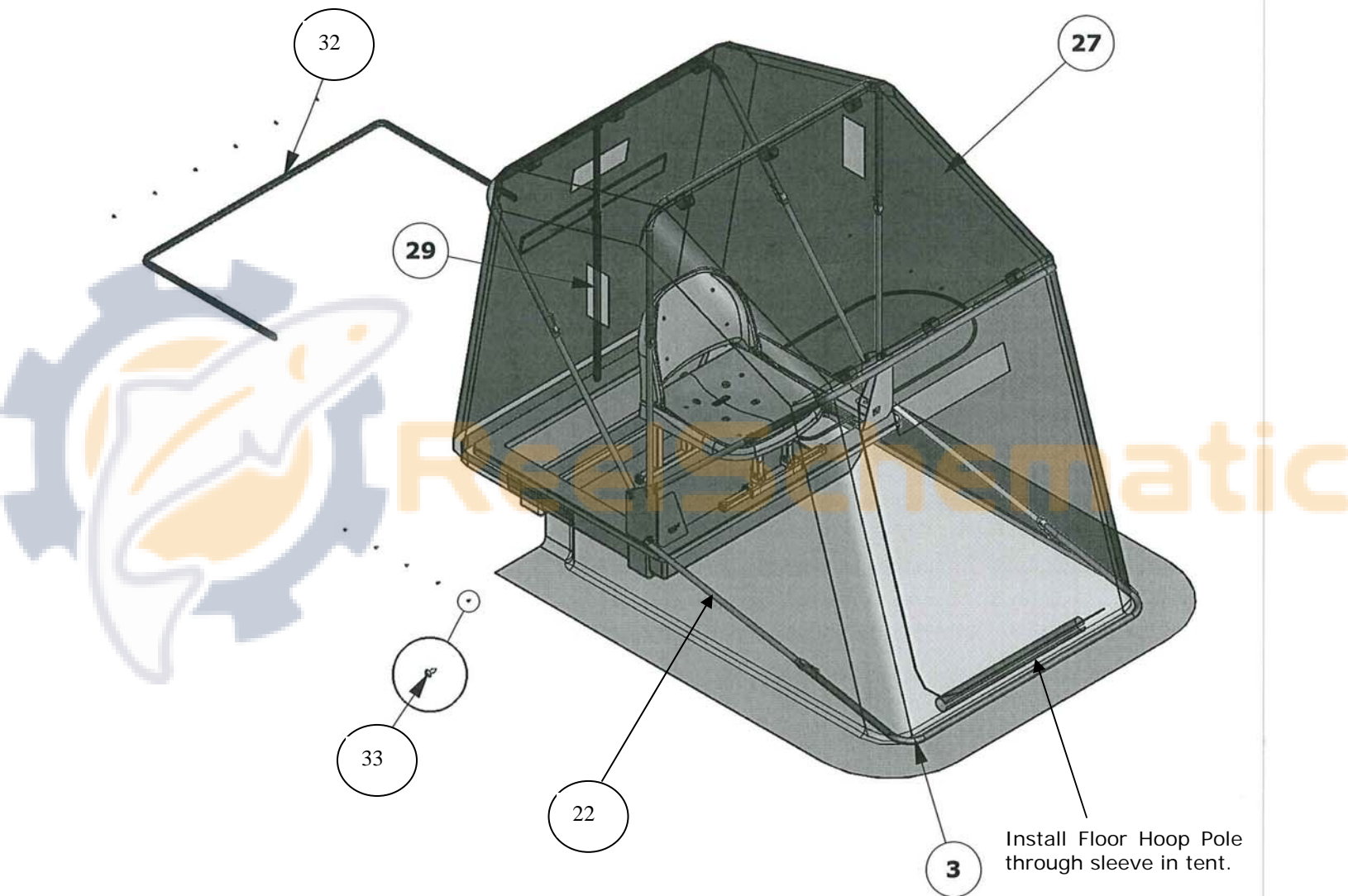


***Slide the hoop poles (item 2) onto the EZ Glide support poles until the spring buttons engage the holes near the ends of each hoop pole. The poles will be fully extended. Do not install the porch hoop pole at this time.***

***Install the rear adjustable spreader pole (item 29) for support (shown in step 12) for installation of tent.***

***Install tow rope (item 28). Knot the ends of rope after routing through pre-drilled holes in base.***

## STEP TWELVE



***Drape the tent over the hoops, then go inside and attach the roof Velcro straps.***

***Slide the porch hoop pole (item 3) through the front hoop sleeve sewn on the tent. Slide the porch hoop pole onto the porch EZ Glide support poles (item 22).***

***Attach the front hoop Velcro on each side of the tent. Remove the rear adjustable spreader pole to allow the tent to be "set" in the next step.***

## - Step Thirteen -

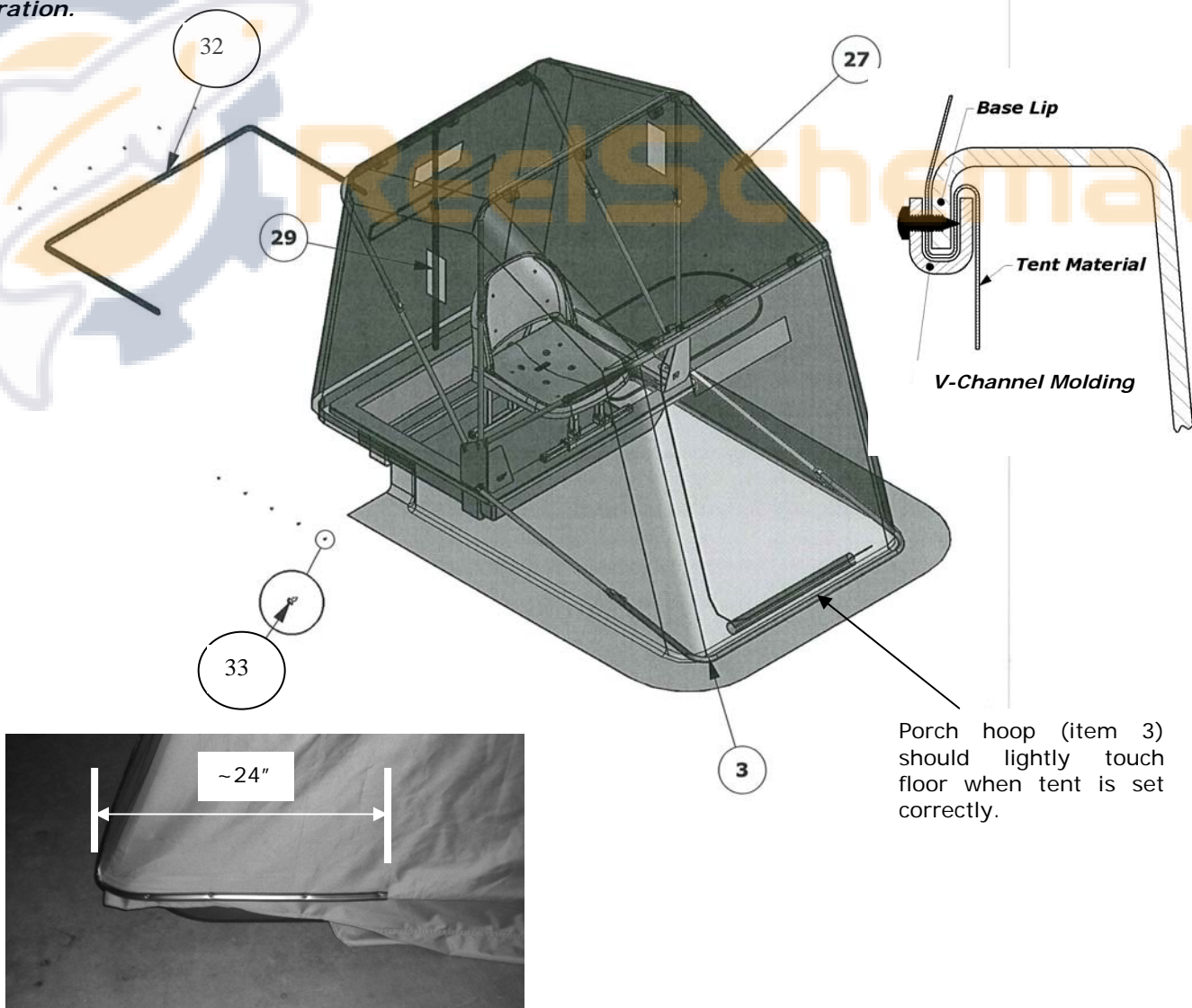
To "set" the tent, grasp the tent material at the rear of the shelter and pull it downward. Observe the porch area of the tent lifting accordingly as you pull. When the V-channel molding (item 32) is correctly installed, the porch hoop pole will lightly touch the floor.

From behind the unit, pull the midpoint of the tent downward until the porch hoop pole just starts to come off the ground. Secure the tent in this position with the V-channel molding. Continue stretching the tent around the base and secure with the molding.

Take a walk around the shelter to inspect. You may have to remove and readjust the tent until you have verified the proper hoop pole position and also that the tent sides and corners are properly proportioned. It is also advised to sit in the seat prior to permanently attaching the tent to ensure that the front porch pole stays in the correct position when weight is added to the shelter seat & base.

When satisfied, secure the molding around the shelter, one direction from center and then the other, keeping the fabric relatively wrinkle-free and snug. Use a side-cutters to trim the ends of the molding if they are not equal relative to the base. The V-channel molding should go approximately 24" up the side of the base toward the front.

Evenly space the screws (item 33) about every four to six inches, and also put a screw in the center of both corners. Since there aren't any predrilled holes, it's advisable to use a powered driver for this operation.



## - Tips for Use -

*Folding and transporting your Clam Ice Fishing shelter is easy:*

- *Unsnap the spreader pole and lay it in the bottom of the base.*
- *Push the Rapid Pole Slide push buttons and retract each hoop, starting with the porch hoop and working towards the middle. Tuck the tent into the base and between the hoops so that no material is left hanging on the ground for transport.*
- *Cover with the Travel Cover\* (PN 108820-an optional but recommended accessory to help prolong the life of your ice shelter).*
- *We recommend the optional Runner Kit\* (PN 108068) be mounted to the base of your shelter (NOTE: Pulling behind an ATV or snowmobile may result in premature wear of the base).*
- *In windy conditions it is advised to secure your shelter to the ice using Clam's Ice Anchor Kit (PN 108064) and Ice Anchor Installation Tool (PN 108348).*

*Make sure your ice shelter is completely dried out after each use. Store your Ice Shelter in a cool, dry place. Keep away from rodents.*

*\*For replacement parts, frequently asked questions, shelter information, and all of your ice fishing needs visit our web site at [www.clamcorp.com](http://www.clamcorp.com).*

## - Safety Instructions -

*Please fully understand and follow all safety instructions as outlined. Failure to do so could result in severe injury or death.*

- *Do not use open flame heaters in your ice shelter. Injury or death may result from fire if tent fabric is exposed to open flame. The tent is not fireproof, but the fabric is treated with a fire retardant that meets CPAI-84 specifications. Application of any foreign substance may render the flame retardant properties ineffective. Ice Armor fabric will melt when contact is made with hot surfaces (i.e., heaters).*
- *Death from asphyxiation may result from use of oxygen depleting heaters. Open all vents for fresh air ventilation.*
- *Never leave shelter unattended when set up.*
- *Due to the increase in traffic (snowmobiles, autos, etc.) on area lakes, ice fishing can be hazardous at night. If you choose to fish at night or in poor visibility conditions, be sure to take precautions with lights or reflectors to show drivers your whereabouts. Night time: exterior reflectors must be visible to reduce risk of collisions.*

### **WARNING**

Death from asphyxiation may result from use of oxygen depleting heaters. Open all vents for fresh air ventilation.

Injury or death may result from fire if tent fabric is exposed to open flame.

Tent fabric is not fireproof. Fabric will burn with extended exposure to open flame. Do not use open flame products inside tent. Tent fabric is treated with fire retardant. Application of any foreign substance may render the flame retardant properties ineffective.

Night time: exterior reflectors must be visible to reduce risk of collisions.

This tent is made with flame resistant fabric which meets CPAI-84 specifications.



## FREQUENTLY ASKED QUESTIONS

- Q: What will help keep mice or rodents from eating my Clam/Fish Trap tent?  
A: Keep your tent in a sealed plastic tote with DRYER SHEETS and or MOTH BALLS. If being stored in a garage, barn, or shed, take tent off the house and store the tent inside the house.
- Q: I have lost my owner's manual where can I get another?  
A: There are owner's manuals available for the last few years' shelters online at the following link, <http://www.clamcorp.com/manuals.html>. You can also contact Customer Service at [customerservice@clamcorp.com](mailto:customerservice@clamcorp.com) and have one sent to you.
- Q: The poles to my Fish Trap/Clam house have bent out of place should I try to bend them back?  
A: It might be possible to bend the pole back into place, if your pole does not have a crease in it. Take the bent pole and lay it on a flat surface and gently bend it back in place.
- Q: The zipper on my tent freezes up and or sticks; is there anything I can use to help prevent this from happening?  
A: Apply Zipper Lube - A gel that you can apply just by squeezing it onto the zipper and moving the zipper back and forth. This can be found in the camping section of most sporting goods store. Silicone spray works well, too.
- Q: Do you have replacement bases available for my Fish Trap or Clam that is a couple years old?  
A: We do have bases available for our current shelters. We may not have the exact replacement for the older style shelters, but may have one that will work. If you would like more information on replacement bases or pricing and availability you can email us at [customerservice@clamcorp.com](mailto:customerservice@clamcorp.com).
- Q: Do you have replacement tents for the current Fish Trap/Clam shelters as well as ones that are older?  
A: We do have replacement tents available for our current shelters. We may not have the exact replacement tent that will fit, but if your house is similar to one of our current style houses we may have a tent that will work. If you would like more information on replacement bases or pricing and availability you can email us at [customerservice@clamcorp.com](mailto:customerservice@clamcorp.com).
- Q: The seat poles, frame poles, or spreader poles of my shelter are sticking, is there anything I can put on these poles to help them slide better?  
A: Apply Zipper Lube, silicone spray, or bar soap. When the poles get slid up and down sometimes burs will get created. If this happens you can separate the poles that are sliding hard and take a fine file or fine sand paper and debur the pole(s) and then apply a light film of lubricant.
- Q: My V-channel molding is difficult to get started what can be done to help?  
A: Heating the V-channel with a hair dryer prior to installation will help make the U-channel molding more pliable.
- Q: Would it be best to completely dry my shelter out every time it gets used?  
A: It is recommended to dry your tent out completely after each use, if not dried completely moisture left in the house may cause damage to your tent.  
\*\*\* Please Note- dry tent completely or remove tent if applicable, if you are going to store over a long periods of time. \*\*\*
- Q: What can I do to make it easier to pull my Clam shelter and protect the base?  
A: We sell runner kits that can be mounted to the base of your shelter. This is recommended especially when pulling with ATV and/or snowmobile. You can purchase a runner kit at a local dealer near you or on our web site at [www.clamcorp.com](http://www.clamcorp.com)
- Q: How do I wash my shelter tent?  
A: You can use a bleach and water solution (10 parts water to 1 part bleach) to get rid of the mildew smell and surface dirt. If you want to wash the tent you can use a standard soap to wash it.  
\*\*\* Please note - We **do not** recommend placing your shelter tent into a washing machine for cleaning. \*\*\*
- Q: Are patch kits available for my Fish Trap and Clam shelter?  
A: Patch kits are available they can be purchased online at [www.clamcorp.com](http://www.clamcorp.com). Instructions are included. "When applying a patch it works best to use spray adhesive (we recommend using 3M #77 or 3M #90 spray adhesive) on to both surfaces; the part of the tent where the patch is going to be applied and the patch itself. Wait until the adhesive begins to dry and becomes tacky, then place the patch on the tent, and they will stick together."
- Q: Am I able to order parts and accessories from Clam website?  
A: Absolutely, if you are not able to find what you need at your local dealer you can go to [www.clamcorp.com](http://www.clamcorp.com) to order your accessories and/or parts.

## FREQUENTLY ASKED QUESTIONS

Q: Is there anything can be put on outside of the tent to prevent water from coming through, when we are using it?  
A: Customers have been known to spray or apply water repellent on the outside of the shelter that you would use for camping tents or boots. (Camp Dry would be an example of this type of product). These products will not damage your tent in anyway.

Q: What is the proper way to set up and take down my Fish Trap?

A: **Set-Up:**

- Face the seats. Grab the hoop that is on top and pull on it until you feel and hear the push buttons engaging in the full open position. Grab the next hoop and do the same until all the hoops are fully open. When finished, you should be inside the shelter.
- Install the roof spreaders, then the front spreader(s), and finally the rear spreader(s). (Spreader count varies with shelter style/configuration – smaller shelters use only a rear spreader).

**Take-Down:**

- Remove all spreaders and lay in the bottom of base.
- For adjustable spreaders, snug the tension knobs after compacting so that they don't vibrate out during transit.
- From inside the shelter, start with the rear wall hoop. Compress both buttons and retract the hoop, then the same with next inward hoop, etc. Continue until all upright hoops are collapsed.
- Step out of the shelter, disengage the porch hoop buttons and swing the porch hoop onto the previously retracted hoops. Make sure the tent does not catch on the mount brackets while collapsing the porch hoop.
- Go around the shelter and tuck the tent material in between the rested hoops the best you can to keep the tent material from dragging during transit – a travel cover works great here to hold everything together.

\*\*\*Please Note: Make sure that the tent material is clear of the canopy brackets to minimize rubbing or possible tearing. \*\*\*

Q: Do you ship outside of the United States?

A: We will take phone orders for any item or parts required to **MAINTAIN** the shelter (tents, poles, parts, patch material, etc.) We will charge for the product plus the actual shipping charges. It will be the customer's responsibility to pay all the importing costs (duties, taxes, etc.) at the time the goods are delivered.

Q: Why can I see pin holes in my fabric?

A: There are a few explanations as to why those pin holes exist. The color and/or black-out coating may be worn off the fabric due exposure to the elements and wear due to friction. Ice Armor fabric is a woven material and these pin holes are parts of the thread that the coating did not attach to. Either way this has no effect on the function of the fabric and is simply an appearance issue.

Q: Why are there cracks on the inside finish of the fabric?

A: This is normal, when you fold up your shelter, lines develop in the fabric. The inside coating may even appear to be peeling. This is normal and will not affect the overall function of the ice house.

Q: Will my fish house leak because I can see pin holes in the fabric?

A: Quite the opposite, as you heat your house and the snow and ice begins to melt, the vapors can better escape the shelter through an uncoated fabric. When it snows or rains, the water molecules are larger than the vapor molecules and cannot pass through the fabric and into the house.

Q: It gets wet in my ice shelter. Will using a heater eliminate water in my shelter?

A: A warm interior coupled with a cold exterior will cause condensation. This moisture collects on the poles, sides, and top of the house and drips inside the house. A by-product of burning propane is water. You may think that a bigger heater would get rid of the water, but the opposite is true. You would actually be creating more moisture due to burning more propane, resulting in more condensation from the heat, ice, and water vapor created by the heater.